

Composites USA, Inc. - FRP Fitting Standards

Fitting Style No. 116

Product Class: DG

Order as: #116 - "D"

#116 FxP - "D" for flange by plain end

#116 FxF - "D" for flange by flange end

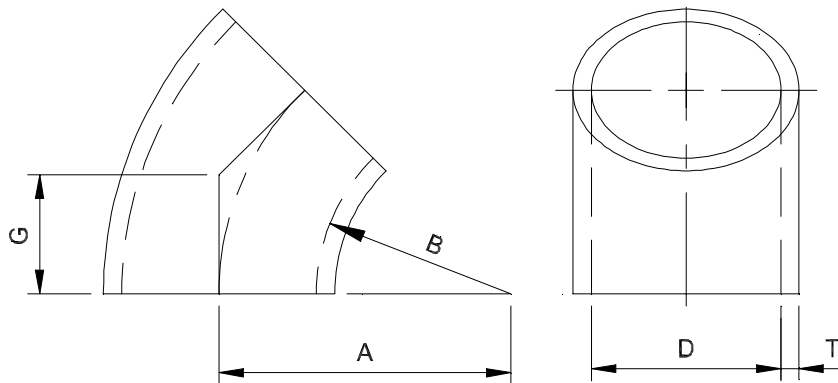
Resin Type: Dual Guard

Project Identification: Standard

Corrosion Allowance: 0.000

Note: Check for current tooling availability

45° SHORT RADIUS ELBOW



| Diameter "D" | | Thickness, "T" | Center-Line Radius "A" | Throat Radius "B" | Height "G" | Diameter "D" | | Thickness, "T" | Center-Line Radius "A" | Throat Radius "B" | Height "G" |
|--------------|-----|----------------|------------------------|-------------------|------------|--------------|------|----------------|------------------------|-------------------|------------|
| inches | mm | | | | | inches | mm | | | | |
| 1 | 25 | 0.150 | 1.0 | 1 | 0.41 | 34 | 864 | 0.190 | 34.0 | 17 | 14.08 |
| 1 1/2 | 38 | 0.150 | 1.5 | 0.8 | 0.62 | 36 | 914 | 0.190 | 36.0 | 18.0 | 14.90 |
| 2 | 51 | 0.150 | 2.0 | 1.0 | 0.83 | 42 | 1067 | 0.260 | 42.0 | 21.0 | 17.39 |
| 2 1/2 | 64 | 0.150 | 2.5 | 1.3 | 1.03 | 48 | 1219 | 0.260 | 48.0 | 24.0 | 19.87 |
| 3 | 76 | 0.150 | 3.0 | 1.5 | 1.24 | 54 | 1372 | 0.260 | 54.0 | 27.0 | 22.35 |
| 4 | 102 | 0.150 | 4.0 | 2.0 | 1.66 | 60 | 1524 | 0.260 | 60.0 | 30.0 | 24.84 |
| 5 | 127 | 0.150 | 5.0 | 2.5 | 2.07 | 66 | 1676 | 0.260 | 66.0 | 33.0 | 27.32 |
| 6 | 152 | 0.150 | 6.0 | 3.0 | 2.48 | 72 | 1829 | 0.313 | 72.0 | 36.0 | 29.81 |
| 7 | 178 | 0.150 | 7.0 | 3.5 | 2.90 | 78 | 1981 | 0.350 | 78.0 | 39.0 | 32.29 |
| 8 | 203 | 0.150 | 8.0 | 4.0 | 3.31 | 84 | 2134 | 0.350 | 84.0 | 42.0 | 34.77 |
| 9 | 229 | 0.150 | 9.0 | 4.5 | 3.73 | 90 | 2286 | 0.375 | 90.0 | 45.0 | 37.26 |
| 10 | 254 | 0.150 | 10.0 | 5.0 | 4.14 | 96 | 2438 | 0.375 | 96.0 | 48.0 | 39.74 |
| 12 | 305 | 0.150 | 12.0 | 6.0 | 4.97 | 102 | 2591 | 0.375 | 102.0 | 51.0 | 42.23 |
| 14 | 356 | 0.150 | 14.0 | 7.0 | 5.80 | 108 | 2743 | 0.375 | 108.0 | 54.0 | 44.71 |
| 16 | 406 | 0.150 | 16.0 | 8.0 | 6.62 | 114 | 2896 | 0.375 | 114.0 | 57.0 | 47.19 |
| 18 | 457 | 0.150 | 18.0 | 9.0 | 7.45 | 120 | 3048 | 0.375 | 120.0 | 60.0 | 49.68 |
| 20 | 508 | 0.150 | 20.0 | 10.0 | 8.28 | 126 | 3200 | 0.375 | 126.0 | 63.0 | 52.16 |
| 22 | 559 | 0.150 | 22.0 | 11.0 | 9.11 | 132 | 3353 | 0.375 | 132.0 | 66.0 | 54.65 |
| 24 | 610 | 0.190 | 24.0 | 12.0 | 9.94 | 138 | 3505 | 0.375 | 138.0 | 69.0 | 57.13 |
| 26 | 660 | 0.190 | 26.0 | 13.0 | 10.76 | 144 | 3658 | 0.375 | 144.0 | 72.0 | 59.61 |
| 28 | 711 | 0.190 | 28.0 | 14.0 | 11.59 | 156 | 3962 | 0.375 | 156.0 | 78.0 | 64.58 |
| 30 | 762 | 0.190 | 30.0 | 15.0 | 12.42 | 168 | 4267 | 0.375 | 168.0 | 84.0 | 69.55 |
| 32 | 813 | 0.190 | 32.0 | 16.0 | 13.25 | 180 | 4572 | 0.375 | 180.0 | 90.0 | 74.52 |

Composites USA

One Peninsula Drive, North East, MD USA 21901
1-410-287-2700 Fax: 1-410-287-5222 info@compositesusa.com