

# Composites USA, Inc. - FRP Fitting Standards

**Fitting Style No. 125**

**Product Class: DG**

**Order as: #125 - "D"**

#125 FxP - "D" for flange by plain end  
#125 FxF - "D" for flange by flange end

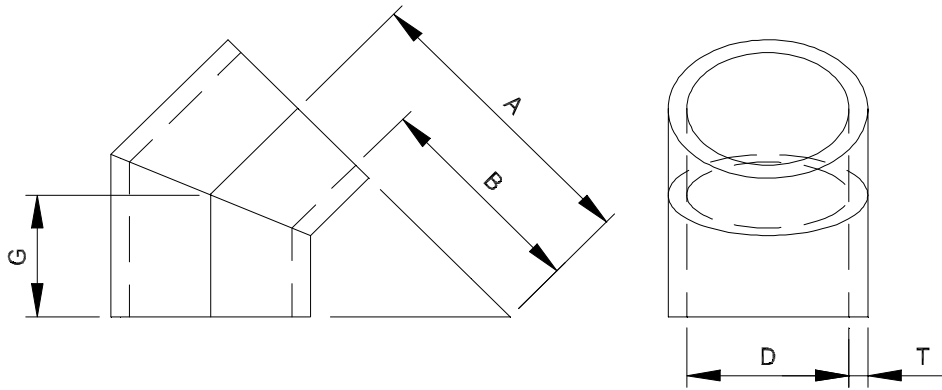
**Resin Type: Dual Guard**

**Project Identification: Standard**

**Corrosion Allowance: 0.000**

**Note:**

## 45° 2-GORE MITERED ELBOW



Diameter "D"		Thickness, "T"	Center-Line Radius "A"	Throat Radius "B"	Height "G"
inches	mm				
1	25	0.150	1.5	1	0.62
1 1/2	38	0.150	2.3	1.5	0.93
2	51	0.150	3.0	2	1.24
2 1/2	64	0.150	3.8	2.5	1.55
3	76	0.150	4.5	3	1.86
4	102	0.150	6.0	4	2.48
5	127	0.150	7.5	5	3.10
6	152	0.150	9.0	6	3.73
7	178	0.150	10.5	7	4.35
8	203	0.150	12.0	8	4.97
9	229	0.150	13.5	9	5.59
10	254	0.150	15	10	6.21
12	305	0.150	18	12	7.45
14	356	0.150	21	14	8.69
16	406	0.150	24	16	9.94
18	457	0.150	27	18	11.18
20	508	0.150	30	20	12.42
22	559	0.150	33	22	13.66
24	610	0.190	36	24	14.90
26	660	0.190	39	26	16.15
28	711	0.190	42	28	17.39
30	762	0.190	45	30	18.63
32	813	0.190	48	32	19.87

Diameter "D"		Thickness, "T"	Center-Line Radius "A"	Throat Radius "B"	Height "G"
inches	mm				
34	864	0.190	51	34	21.11
36	914	0.190	54	36	22.35
42	1067	0.260	63	42	26.08
48	1219	0.260	72	48	29.81
54	1372	0.260	81	54	33.53
60	1524	0.260	90	60	37.26
66	1676	0.260	99	66	40.98
72	1829	0.313	108	72	44.71
78	1981	0.350	117	78	48.44
84	2134	0.350	126	84	52.16
90	2286	0.375	135	90	55.89
96	2438	0.375	144	96	59.61
102	2591	0.375	153	102	63.34
108	2743	0.375	162	108	67.06
114	2896	0.375	171	114	70.79
120	3048	0.375	180	120	74.52
126	3200	0.375	189	126	78.24
132	3353	0.375	198	132	81.97
138	3505	0.375	207	138	85.69
144	3658	0.375	216	144	89.42
156	3962	0.375	234	156	96.87
168	4267	0.375	252	168	104.32
180	4572	0.375	270	180	111.77

**Composites USA**

One Peninsula Drive, North East, MD USA 21901  
1-410-287-2700 Fax: 1-410-287-5222 info@compositesusa.com