

Composites USA, Inc. - FRP Fitting Standards

Fitting Style No. 170

Product Class: DG

Order as: #170 - "D"

#170 PPF - "D" for one end (branch) flanged
 #170 FFP - "D" for two ends (run, run) flanged
 #170 FFF - "D" for all flanged ends
 Show "F" in the desired flange location

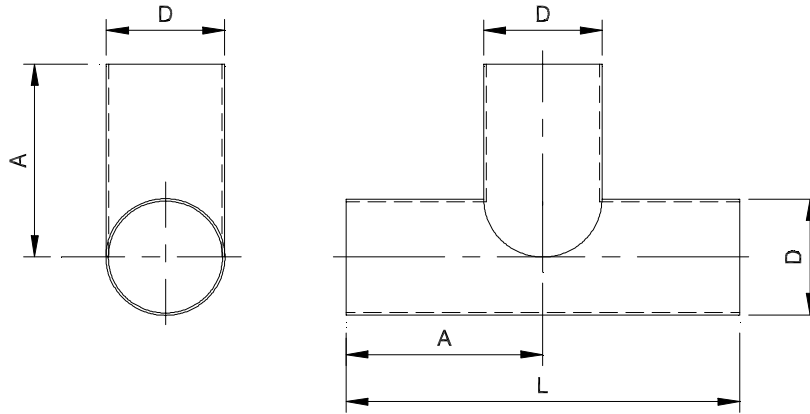
Resin Type: Dual Guard

Project Identification: Standard

Corrosion Allowance: 0.000

Note: L shown is standard, custom lengths avail.

STANDARD TEE



Diameter "D"		Face to Centerline "A"		Length "L"	Thick. "T"	Diameter "D"		Face to Centerline "A"		Length "L"	Thick. "T"
inches	mm	inches	mm	inches	inches	inches	mm	inches	mm	inches	inches
1	25	6	152	12	0.150	34	864	32	813	64	0.190
1 1/2	38	6	152	12	0.150	36	914	33	838	66	0.190
2	51	6	152	12	0.150	42	1067	36	914	72	0.260
2 1/2	64	7	178	14	0.150	48	1219	42	1067	84	0.260
3	76	7	178	14	0.150	54	1372	45	1143	90	0.260
4	102	8	203	16	0.150	60	1524	48	1219	96	0.260
5	127	8	203	16	0.150	66	1676	51	1295	102	0.260
6	152	10	254	20	0.150	72	1829	54	1372	108	0.313
7	178	10	254	20	0.150	78	1981	57	1448	114	0.350
8	203	12	305	24	0.150	84	2134	60	1524	120	0.350
9	229	12	305	24	0.150	90	2286	63	1600	126	0.375
10	254	14	356	28	0.150	96	2438	66	1676	132	0.375
12	305	16	406	32	0.150	102	2591	69	1753	138	0.375
14	356	18	457	36	0.150	108	2743	72	1829	144	0.375
16	406	20	508	40	0.150	114	2896	75	1905	150	0.375
18	457	21	533	42	0.150	120	3048	78	1981	156	0.375
20	508	22	559	44	0.150	126	3200	81	2057	162	0.375
22	559	22	559	44	0.150	132	3353	84	2134	168	0.375
24	610	24	610	48	0.190	138	3505	87	2210	174	0.375
26	660	26	660	52	0.190	144	3658	90	2286	180	0.375
28	711	28	711	56	0.190	156	3962	96	2438	192	0.375
30	762	30	762	60	0.190	168	4267	102	2591	204	0.375
32	813	31	787	62	0.190	180	4572	108	2743	216	0.375

Composites USA

One Peninsula Drive, North East, MD USA 21901
 1-410-287-2700 Fax: 1-410-287-5222 info@compositesusa.com