

# Composites USA, Inc. - Fitting Standards

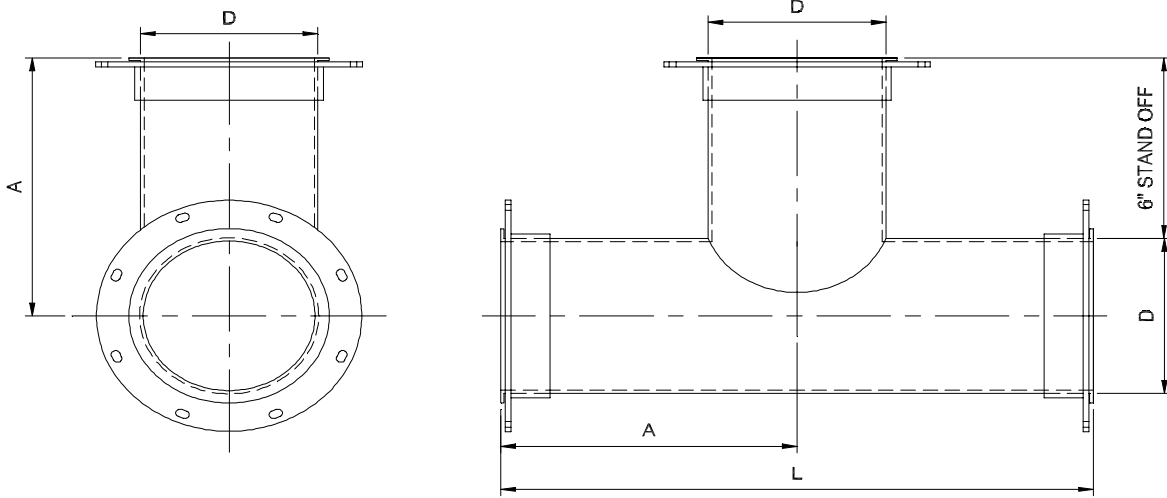
**Fitting Style No.:** SS-170  
**Order as Fitting:** SS-170    -"D"

**Material:** Pure Guard SS  
**Options:**  Stainless bolt set  
 Stainless Flange Rings  
 Quick Clamps (Avail. <= 18")



**Project Specifications:** Standard Design & Materials, -6" w.c.  
 Ships standard with quick clamps and gaskets for all ends = 2" & 3" diameter  
 Ships standard with A-36 steel rings >3", SS rings >48" diameter, one plated bolt set and gasket

## STANDARD TEE



Diameter "D"		Face-C/L "A"		Length, "L"			Diameter "D"		Face-C/L "A"		Length, "L"	
inches	mm	inches	mm	inches	mm		inches	mm	inches	mm	inches	mm
2	51	3.07	78	6.14	156		44	1118	28	711	56	1422
3	76	3.32	84	6.64	169		46	1168	29	737	58	1473
4	102	8	203	16	406		48	1219	30	762	60	1524
6	152	9	229	18	457		50	1270	31	787	62	1575
8	203	10	254	20	508		52	1321	32	813	64	1626
10	254	11	279	22	559		54	1372	33	838	66	1676
12	305	12	305	24	610		56	1422	34	864	68	1727
14	356	13	330	26	660		58	1473	35	889	70	1778
16	406	14	356	28	711		60	1524	36	914	72	1829
18	457	15	381	30	762		62	1575	37	940	74	1880
20	508	16	406	32	813		64	1626	38	965	76	1930
22	559	17	432	34	864		66	1676	39	991	78	1981
24	610	18	457	36	914		68	1727	40	1016	80	2032
26	660	19	483	38	965		70	1778	41	1041	82	2083
28	711	20	508	40	1016		72	1829	42	1067	84	2134
30	762	21	533	42	1067		78	1981	45	1143	90	2286
32	813	22	559	44	1118		84	2134	48	1219	96	2438
34	864	23	584	46	1168		90	2286	51	1295	102	2591
36	914	24	610	48	1219		96	2438	54	1372	108	2743
38	965	25	635	50	1270		108	2743	60	1524	120	3048
40	1016	26	660	52	1321		120	3048	66	1676	132	3353
42	1067	27	686	54	1372		132	3353	72	1829	144	3658