

Composites USA, Inc. - Fitting Standards

Fitting Style No.: SS-205
Order as Fitting: SS-205

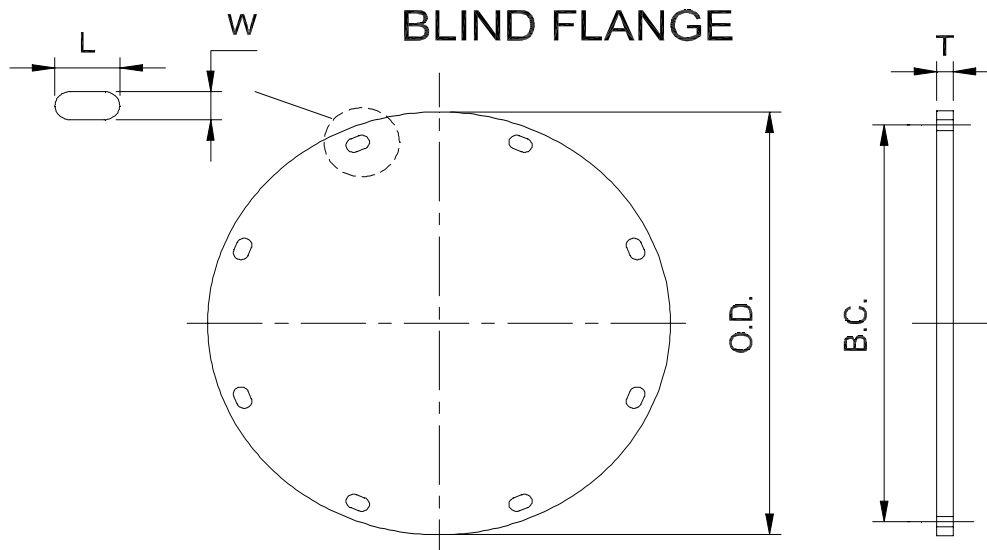
-"D"

Material: Pure Guard SS

- Options:**
- Stainless bolt set
 - Stainless Flange Rings
 - Quick Clamps (Avail. <= 18")



Project Specifications: Standard Design & Materials, -6" w.c.
 Ships standard with one plated bolt set and gasket



Duct Diam D	T	BC	No. Holes	Hole Size LxW	Bolt Size	Gasket WxT	Duct Diam D	T	BC	No. Holes	Hole Size LxW	Bolt Size	Gasket WxT
inches	inches	inches	Number	inches	inches	inches	inches	inches	inches	Number	inches	inches	inches
4	22 gage	5.31	6	3/8 x 5/8 slot	5/16	3/16 x 1/8	52	12 gage	54.88	48	9/16 x 1 slot	7/16	1/4 x 3/16
6		7.50	6				54		56.88	52			
8		9.50	8				56		58.88	52			
10		11.50	8				58		60.88	56			
12		13.81	12				60		63.38	56			
14		15.81	12				62		65.38	60			
16		17.63	16				64		67.38	60			
18		19.63	16				66		69.38	64			
20		21.63	20				68		71.38	64			
22		23.88	20				70		73.38	68			
24	25.88	20	72	75.38	68								
26	27.88	24	74	77.38	72								
28	12 gage	29.88	24	7/16 x 11/16 slot	3/8	1/4 x 3/16	76	1/2 inch	79.38	72			
30		31.88	28				78		81.38	76			
32		33.88	28				84		87.38	80			
34		35.88	32				90		93.38	88			
36		37.88	32				96		100.38	92			
38		40.38	36				102		106.38	100			
40		42.38	36				108		112.38	104			
42		44.38	40				114		118.38	112			
44		46.38	40				120		124.38	116			
46		48.00	44				126		130.38	120			
48	50.38	44	132	136.38	124								

Composites USA

One Peninsula Drive, North East, MD USA 21901
 1-410-287-2700 Fax: 1-410-287-5222 info@compositesusa.com