

Composites USA, Inc. - Fitting Standards

Fitting Style No.: SS-208
 Order as Fitting: SS-208

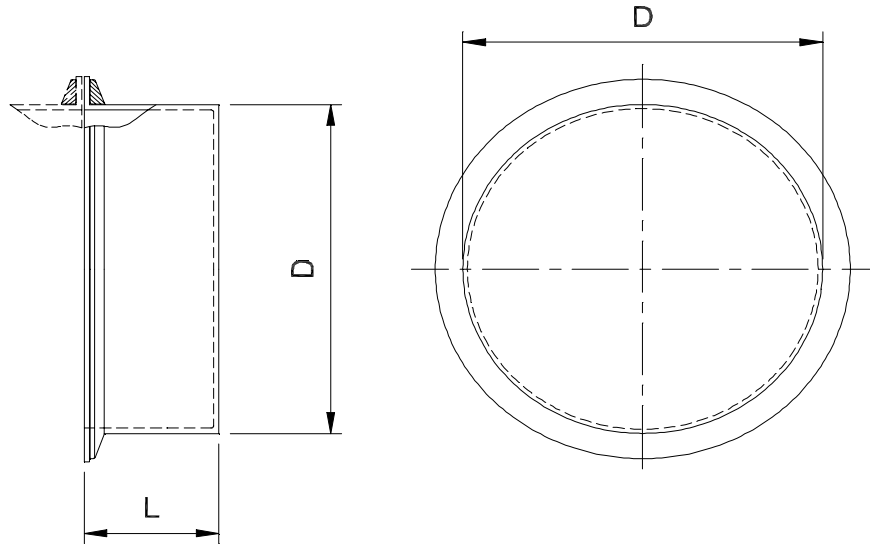
-"D"

Material: Pure Guard SS
 Options: Alternative Lengths



Project Specifications: Standard Design & Materials, -6" w.c.

END CAP FOR QUICK CLAMP



Diameter "D"		Length "L"		Min Cap Thickness			Diameter "D"		Length "L"		Min Cap Thickness	
inches	mm	inches	mm	gage	mm		inches	mm	inches	mm	gage	mm
2	51	2.0	51	14	2.0		10	254	1.5	38	14	2.0
3	76	2.0	51	14	2.0		12	305	1.5	38	14	2.0
4	102	1.5	38	14	2.0		14	356	1.5	38	14	2.0
6	152	1.5	38	14	2.0		16	406	1.5	38	14	2.0
8	203	1.5	38	14	2.0		18	457	1.5	38	14	2.0

Composites USA

One Peninsula Drive, North East, MD USA 21901
 1-410-287-2700 Fax: 1-410-287-5222 info@compositesusa.com